

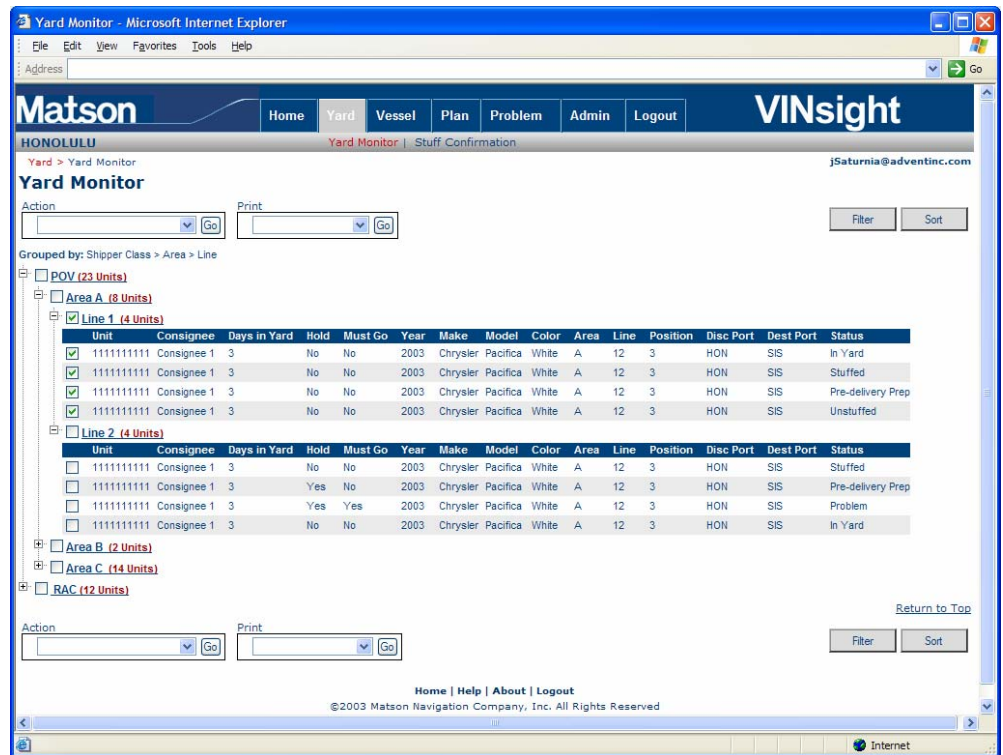
Advent Case Study

Auto Terminal System

Matson Navigation Company is the leading shipper of automobiles to Hawaii. Matson ships cars out of three terminals on the west coast and five terminals in Hawaii.

Matson was looking for an integrated multi-terminal solution to managing the shipment of auto and other RORO cargo between Hawaii and the US mainland.

Matson required that the system be automated using barcodes to track cargo moving through the system. They also needed the ability to read the barcoded VIN Number on the automobiles they shipped.



Advent developed a solution consisting of hand held computers, image scanners, belt printers, high speed bar code printers and long range 802.11 wireless networking to exceed Matson's expectations. With the system, vehicles are tracked from the moment they first arrive at a Matson facility until the moment they leave.



The system enables users to plan both yard and vessel operations as well as forecast future yard and vessel inventory. The system integrates with Matson's Booking and Documentation systems.

The PC interface was developed in Java. The handheld interface was developed in Microsoft .Net. The database was Oracle 9i.



For more information on this and other case studies, please contact Michael Mayhew, Vice President of Business Development at (908) 795-3223 or mmayhew@adventinc.com