

Advent Case Study

Web Terminal Management System

Ceres Terminal's RORO operation was all on paper. They needed to install a terminal system to manage their operation, trade EDI with their customers and vendors.

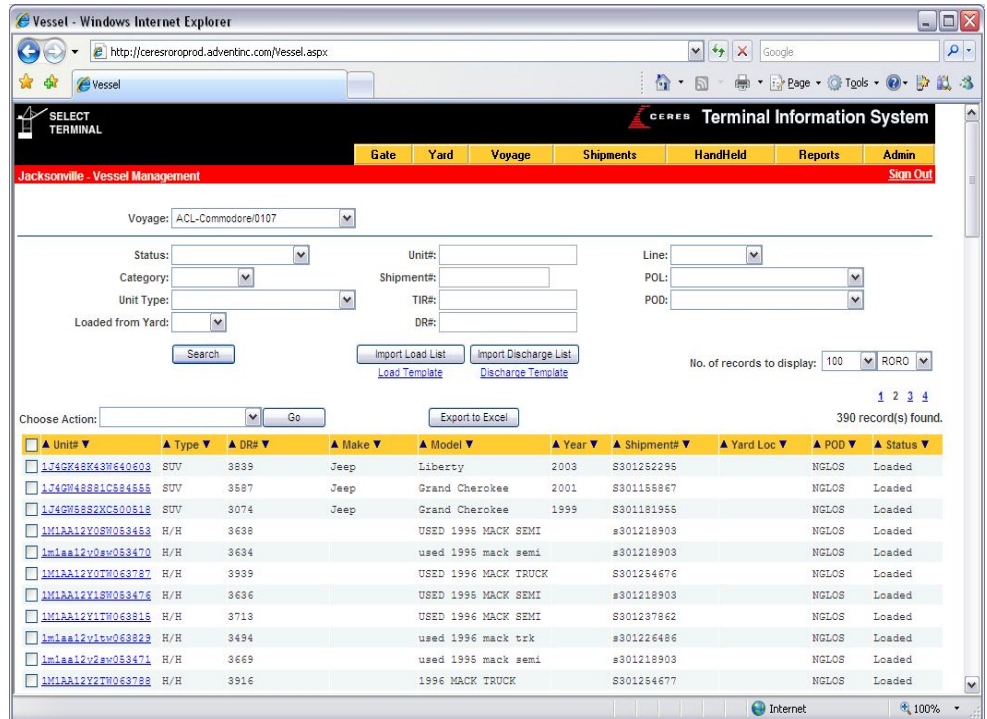
Ceres Terminal RORO Division had a few unique requirements. They wanted a centralized system that could easily be expanded to more terminals in the future. They needed hand held computers with extensive screen interfaces and wireless network support for both WIFI and Cellular CDMA to process the cargo moving in and out of the terminal. They also had specialized requirements for bar-coding and the shipment of break-bulk cargo.

Ceres hired Advent to implement Auto-track solutions as a complete multi-terminal operation system. The

web-based system supports EDI, wireless hand held computers and printers, labeling, bar-coding as well as sophisticated reporting and analysis.

Auto-track solution is design to provide a thick client UI for mobile terminal users. Users access this application on Windows CE based handheld computer. This unique interface implements offline transaction processing with local data caching and allows Ceres to optimize WIFI/CDMA bandwidth usage.

Auto-track solution implements Biztalk based EDI sub system for application integration and EDI requirements. The EDI subsystem is composed of 4 primary layers. This layered design simplifies customization, and deepens the understanding of the system, eliminating questions and confusion that arise from a "black box" approach. Throughout all four layers and even in the middle tier, trading partner information is completely table driven. From defining, activating and deactivating shippers to extracting and sending particular types of gate moves to a specific partner, the table-driven design provides the ultimate flexibility.



For more information on this and other case studies, please contact Michael Mayhew, Vice President of Business Development at (908) 795-3223 or mmayhew@adventinc.com

The system was developed using Microsoft .Net technology to run on MS SQL Server 2005 servers with Windows CE handheld computers and Zebra portable printers.

Implementation of Auto-track helped Ceres Terminals to improve the RORO terminal operations significantly. Replacing manual logging vessel loading and discharging events with a handheld solution with no connectivity issues has reduced vessel reconciliation process to hours from days. Since going live in Baltimore in fall of 2006 Ceres has implemented this system at their Jacksonville terminals with minimum user training and impact to existing operations.

