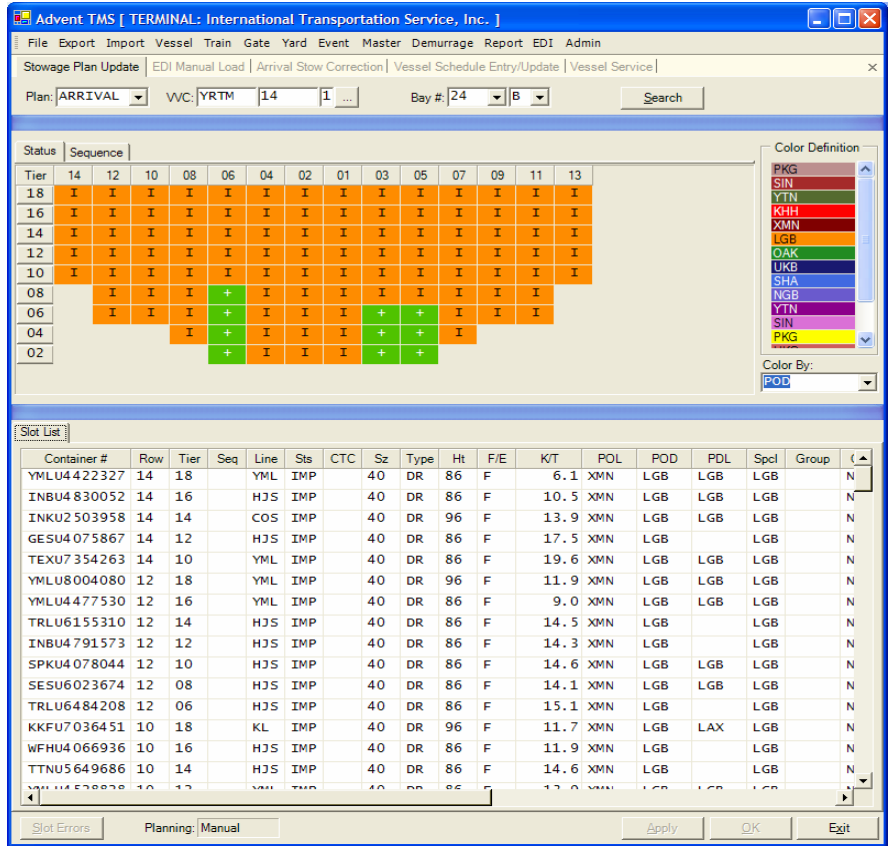




Terminal Management System

International Transportation Services (ITS) is a terminal management and stevedoring company based in Long Beach, CA. ITS operates three West Coast terminals (Long Beach, Tacoma, and Oakland) with a total annual throughput of 1.5 million TEU's. ITS was looking for a central terminal management system to manage all of their terminals with complete Yard, Vessel, On-Dock Rail operations planning and execution along with a fully automated Gate interface, including printing and processing Gate tickets.

Following an internal ROI and off the shelf product analysis phase, ITS turned to Advent to design and custom develop an enterprise solution based on Microsoft .Net technology and MS SQL Server 2000 to replace their antiquated AS400 application.



This system has a Win Forms based rich graphical user interface (GUI) which is easy to install and very user friendly. There is minimal user training required for any terminal user, regular or casual. Configurable business rule implementation allows different terminals, within the ITS organization, to adapt to specific requirements from different shipping lines. This system provides seamless interfaces with several third party applications such as the L.A. King Gate system and Vehicle Mounted RDT's that are used for accurate Yard Inventory Management.

At the core of this system is a robust and sophisticated EDI engine, which allows ITS to seamlessly interface with their partners. This central gateway is managed by distributed and fault tolerant components to ensure a constant and efficient data flow to all terminals within the organization, on a 24 x 7 basis. Microsoft technologies, including a highly customized BizTalk Server environment, are harnessed together to yield high availability and streamlined performance for this mission critical process.

KAWASAKI KISEN K.K.		0004	
Lane: 12	**	EXPORT-OUT EIR	** May/26/05 16:01:19
Container: KKFYTC1602	Size/Type: 20DR86	Spot: A01314	genset:
Chassis: FB	Size/Type:	Spot:	
Vessel:	Voyage:	Ref No:	
Driver License: 00135218	Trucking Co: ULS EXPRESS INC		
Driver Name: WILLIAM RUCKMAN	Clerk Name: ITS USER		

